

SafePilot Offshore 24.3 User Guide



Contents

1	Introduction to SafePilot Offshore	4
1.1	Benefits of greater piloting control	4
2	Getting started	5
2.1	Access to Local Network	5
2.2	Licensing	6
2.3	The settings app	7
3	PPU device setup	8
3.1	Antenna setup	8
3.2	Connecting the iPad to a CAT device	8
3.3	GPS and device status	8
4	Understanding the panels	10
4.1	The <i>Top Panel</i>	10
4.2	The <i>Contexts Panel</i>	10
4.3	The <i>Tools Panel</i>	10
5	Chart control	11
5.1	Chart orientation, scaling and navigation	11
6	Passage plan	12
6.1	Vessel setup	12
6.2	GPS antenna setup	12
6.3	Notes	13
6.4	Route	13
7	Vessel details	14
7.1	Own vessel	14
7.2	Other vessels	17
8	Contexts	18
8.1	The planning context	18

8.2	The navigation context	20
8.3	The docking context	20
8.4	The turning basin context	21
8.5	The side by side context	21
8.6	The tandem context	21
8.7	The single point mooring context	22
9	Recording and Replaying	23
9.1	AIS recording	23
9.2	Voice recordings	23
10	Fullscreen displays	25
10.1	Side by Side Fullscreen	25
10.2	Generic Fullscreen	25
11	Control center	27
11.1	Display settings	27
11.2	Motion	29
11.3	Server	30
11.4	Charts	30
11.5	About	30
12	Charts	31
12.1	PRIMAR charts	31
12.2	NOAA charts	31
12.3	Distribute charts to all users	31
12.4	Manual installation of charts	31
13	File handling	32
13.1	Access the SafePilot Offshore documents folder of the iPad	32
	Appendices	33
A	Feature layer sets	33
A.1	The basic feature set	33

A.2 The standard feature set	33
A.3 The full feature set	34
B The sasc file format	36
C Categories of zones of confidence	37

1 Introduction to SafePilot Offshore

SafePilot Offshore from Trelleborg offers the latest in navigation and piloting for offshore systems. SafePilot Offshore is a flexible piloting tool that can be extended by modules to fulfil a wide variety of demands for different offshore operations. Developed in conjunction with working marine and offshore pilots from across the world, SafePilot Offshore offers the most up to date user friendly portable pilot unit software available. Built around the iPadOS operating system, SafePilot Offshore supports the use of handheld tablets for improved portability and instant accessibility. A touch screen interface allows quick interaction with the PPU to make piloting smoother and easier, while the instant zoom function and new intelligent chart structure give you faster zooming than any other navigational software.

Most offshore operations have other demands and tasks than the general approach to the harbor. The main difference is that offshore operations needs live relational data between vessels, such as distances and bearing. SafePilot Offshore adds tools for the pilot to complete these tasks with success.

1.1 Benefits of greater piloting control

IMPROVED ACCURACY

With SafePilot Offshore, only information relevant to the current operational phase is provided. Filtering data in this way eliminates the risk of information overload, allowing faster, more accurate and more confident decision making.

ENHANCED SAFETY

SafePilot Offshore gives an enhanced situational overview of current and other vessels, including true shape graphics, speed and direction to improve safety. The pre-operation demonstration capability and lock feature against accidental modification also support a safe port approach.

REAL TIME INFORMATION

By providing accurate real time data, such as rate of turn, that is independent of a ship's AIS, SafePilot Offshore improves communication between the bridge team, pilot and port to reduce the margin for error.

2 Getting started

2.1 Access to Local Network

The TrelleborgPPUs create a local WiFi hotspot to which the iPad is connected (see section 3.2 on page 8). In iPadOS14 and later, SafePilot Offshore needs permissions to connect to devices on the local network to be able to communicate with the PPU. When SafePilot Offshore starts the first time it will ask for permissions. Press OK.

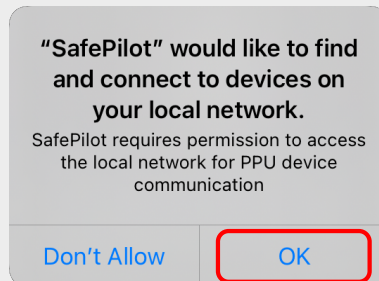


Figure 2.1: Allow local network access for SafePilot Offshore.

If you pressed 'Don't Allow' by mistake, the permission can be changed in iPadOS Settings in the SafePilot Offshore section in the field 'Local Network'.

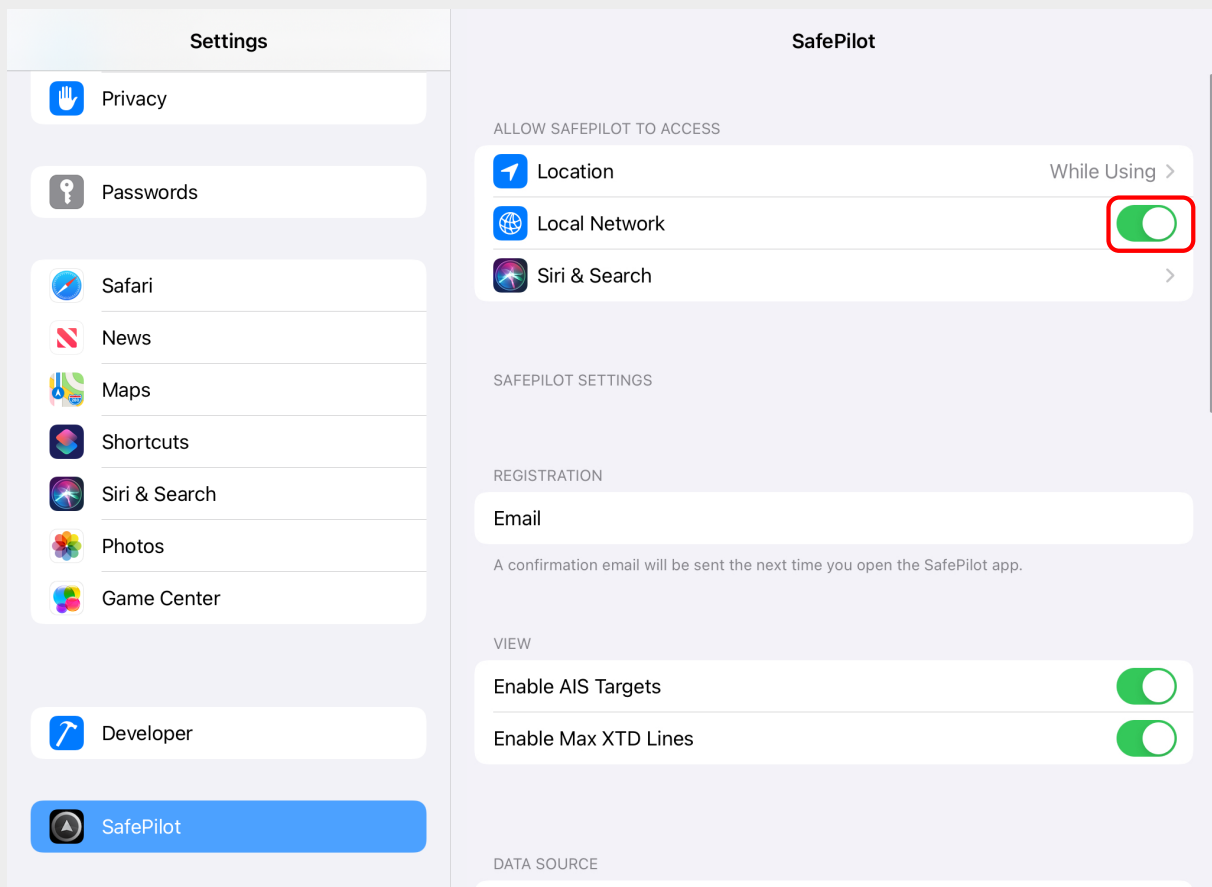


Figure 2.2: Allow local network access for SafePilot Offshore from settings.

2.2 Licensing

You need to register your SafePilot Offshore software with an e-mail address which will serve as your license ID.

This is done in the settings app (section 2.3 on the next page) and requires an internet connection to complete. Fill in the email address (fig. 2.3) attached to your license and start SafePilot Offshore. It will then check for an available license and download it. The content of the license may be validated within the *About* tab within the *Control Center* in section 11.5 on page 30.

Note 2.2-1

Every time you register a license on a new iPad, you will need to confirm the registration by clicking in the email sent to the email address by Trelleborg.

Note 2.2-2

If you are in charge of multiple devices, each device must be registered with a unique license to work properly.

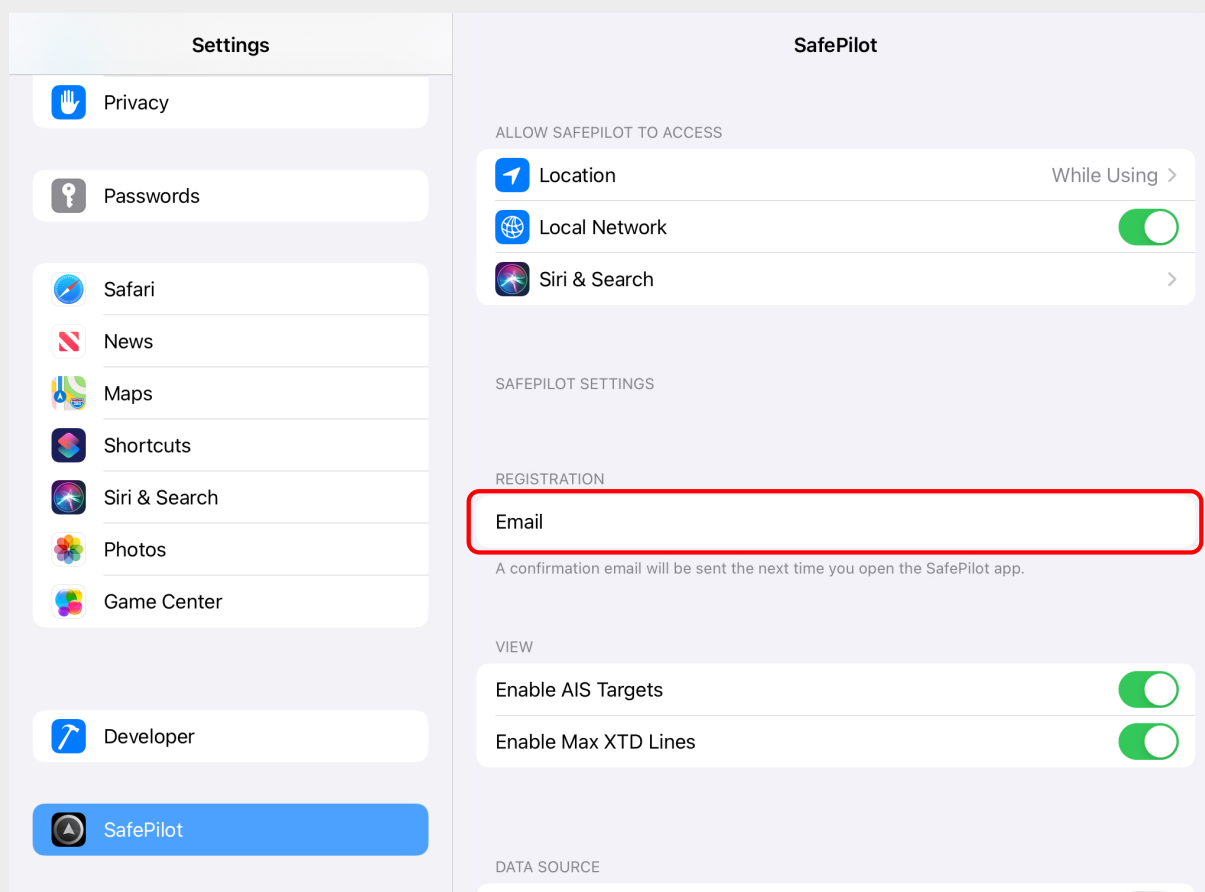


Figure 2.3: Add SafePilot Offshore license.

2.3 The settings app

You may configure personal settings for SafePilot Offshore within the *Settings app*. These settings are not meant to be changed very often and are therefore not included within SafePilot Offshore. The configurations you will find are among others:

- Licensing
- AIS targets
- Expected GPS source
- Units
- Ship details

To access the *Settings app* go to the *Home screen* → *Settings* → *SafePilot Offshore* and look at the options available. See fig. 2.4.



Figure 2.4: How to access SafePilot Offshore inside iPadOS' *Settings app*.

3 PPU device setup

3.1 Antenna setup

To obtain the full performance and accuracy of a CAT device the antenna locations must be chosen with care. The following points must be fulfilled for optimal operation. See an example in fig. 3.1. see further instructions in the manual of the device located at: <https://safepilot.eu/manuals/>.

1. The antennas must be a minimum of 1 meter away from any obstructions.
2. The antennas should have a clear view of the sky.
3. The antennas should be placed with a minimum of 4 meters between (baseline). A shorter baseline will result in a decrease of heading accuracy.



Figure 3.1: Note the surroundings when positioning the CAT device.

3.2 Connecting the iPad to a CAT device

All CAT devices communicate with the iPad using a local Wi-Fi network. After turning on the CAT device, the Wi-Fi network will appear in the list of available Wi-Fi networks on the iPad.

To connect to a CAT device, go to the iPad Wi-Fi settings and select the network created by the CAT device. The name of the network is the device's model name followed by a unique number.

Once connected to a CATs network, the iPad will remember the network and automatically connect to it in the future.

3.3 GPS and device status

You can always investigate the GPS and device status from SafePilot Offshore. The current status of the GPS is always visible in the left side of the *Top Panel*. By tapping on it, you will see details about the position source and the CAT unit - see fig. 3.2 on the next page.

Tapping on the satellites line in the list brings up more details about the current satellite constellation. This includes among other things the PRN number, elevation, azimuth, signal/noise ratio and what system they belong to (GPS, Galileo or GLONASS). To see the raw data received from the connected device tap on the list symbol (3 blue lines) at the top right corner. If a connected device is low on battery,

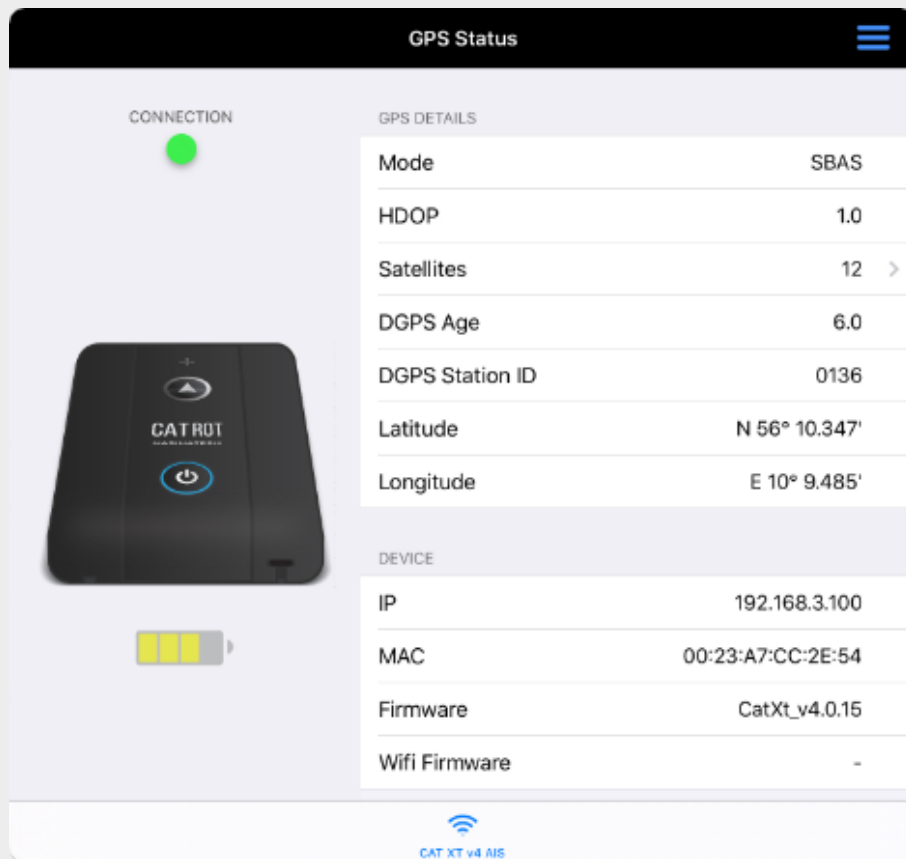


Figure 3.2: The detailed GPS and device status view within SafePilot Offshore.

a battery warning symbol is shown alongside the GPS status icon and by the battery indicator in the detailed window. If the battery level becomes critical, the battery warning symbol will flash.

The GPS mode can be used to locate the expected accuracy as shown in table 3.1.

Mode	CAT I, CAT XT	CAT MAX, CAT PRO
RTK		1-2 cm.
FRTK		20 cm.
DGPS	50 cm.	40 cm.
SBAS	70 cm.	60 cm.
GPS	150 cm.	120 cm.
AIS	Based on vessel instrumentation.	
EST	Estimated.	
iPad	Using the internal GPS of the iPad.	
INV	Invalid position data.	
N/A	No data received.	

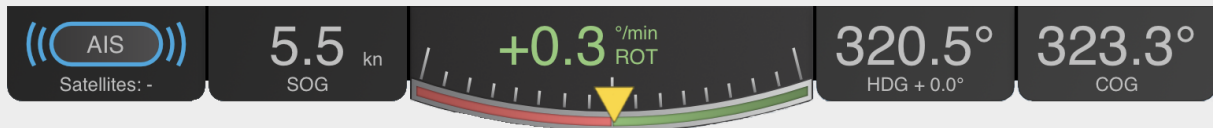
Table 3.1: Shows the maximum +/- accuracy based on the GPS mode ordered from highest to lowest.

4 Understanding the panels

4.1 The Top Panel

The *Top Panel* is always displayed at the top of the screen. It contains the most important navigational information.

From the left: Position source and status, speed over ground (SOG), rate of turn (ROT), heading (HDG) and course over ground (COG).



The *Contexts Panel* is positioned on the left-hand side and is used to switch between operation modes, called: Contexts. It includes from the top:

- The *Passage Plan* (described in section 6 on page 12)
- The *Context Wheel* (described in section 8 on page 18)
- The *Control Center* (described in section 11 on page 27)

4.2 The Contexts Panel

In the case where more than one context is available, the *Context Wheel* is used to switch between these. Each context is specialized to display the most relevant information about the current operation.

The panel can be hidden by dragging it out of the screen, enabling more screen space.

4.3 The Tools Panel

Some contexts include additional panels positioned either on the right-hand side or at the bottom of the screen. These panels include additional information that is essential to the operation.

As with the *Contexts Panel*, the right-side panel can also be hidden by dragging it out of the screen.



5 Chart control

SafePilot Offshore supports instant zooming and fast response times on user input. To operate the chart view you simply do any of the following:

- Drag to pan.
- Pinch or double tap to zoom.

5.1 Chart orientation, scaling and navigation



A compass is located in the top right corner of the screen. A scale label is placed below the compass which indicates the distance from the center of the screen to the top of the screen.

By tapping on the compass you will get options to change the orientation of the chart and to quick jump between locations and vessels.

If you choose to use heading up, the compass will rotate towards north as your vessel rotates in the chart. If you hold your finger on the compass symbol, the chart orientation mode is toggled between north and heading up.

In the *Quick Jump Panel*, it is possible to define views and name them. Having named locations allows you to quickly reposition the chart on the desired location without having to pan and zoom on the chart. When adding a new view, the current zoom level and location is saved with a name. To quickly change to one of the named locations – simply tap on the name in the list. You can rearrange and delete items on the list by pressing edit. In the bottom of this window you can select the *Vessels* tab. This will bring you to the list of all vessels currently in the chart. These vessels are sorted with the closest at top or alphabetically. Select a vessel to see the list of its particulars and tap on the magnification symbol to jump to its location.

Whenever your vessel is shown on the screen, the screen will follow the vessel. If the chart is moved, so your vessel is no longer visible on the screen, the screen will be fixed on the current location and will no longer follow your vessel. In this case an arrow pointing to your vessel will be shown to indicate in which direction the vessel is heading. By tapping this arrow symbol, the chart will be repositioned at your vessel.

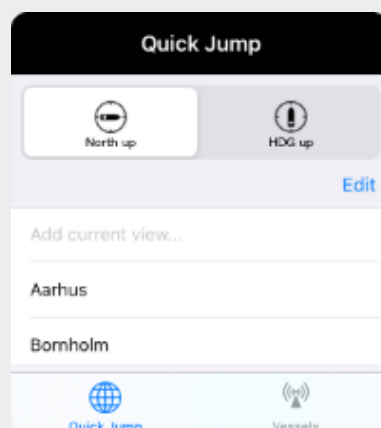


Figure 5.1: The *Quick Jump Panel*.

6 Passage plan

The *Passage Plan* allows you to configure your own vessel particulars as well as the planned route for the operation. It is accessed by tapping on the list icon at the top of the left-hand sidebar. Note that a warning symbol on the icon indicates that essential data are missing for optimal operation.

6.1 Vessel setup

Vessels received from AIS are automatically saved for easy setup. To select a vessel, tap the arrow next to the vessel name and select a vessel. Alternatively you may enter all data manually.

6.1.1 THE REFERENCE POINT

The reference point is usually used as the conning position which are the base for many calculations in SafePilot Offshore. The position is defined by the distance from the bow to a point of your choice. See more about the conning position in section 7.1.3 on page 14.

6.2 GPS antenna setup

The GPS antenna offsets indicate the location of the GPS antenna(s) on your own vessel, e.g. CAT I, CAT XT, CAT MAX or the vessels own GPS antenna if you are using a CAT ROT. The vessel sketch on the left side of the *Passage Plan* shows the current antenna position based on the entered offsets.

6.2.1 BEAM OFFSET

The beam offset is used to add a sideways offset of the antenna. You can add an offset relative to port, center or starboard. When *port* or *starboard* is chosen, the offset value will move the position towards the opposite side and when *center* is chosen a positive value will move it towards starboard and a negative value towards port.

6.2.2 HEADING OFFSET

CAT MAX allows for independent heading which requires you to enter a heading offset based on the position of the antennas.

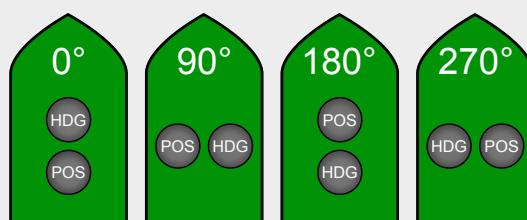


Figure 6.2: GPS antenna offset value relative to its positioning.

The screenshot shows the 'Passage Plan' interface. On the left is a green vessel sketch with a yellow dot representing the antenna position. On the right is a form titled 'Vessel' with a '+ Create new vessel' link. The form is divided into three sections: 'VESSEL CHARACTERISTICS', 'GPS ANTENNA OFFSETS', and 'VESSEL NOTES'. The 'VESSEL CHARACTERISTICS' section includes fields for Name, MMSI, IMO, Length, Beam, Draught, Reference point, and Manifold offset. The 'GPS ANTENNA OFFSETS' section includes a dropdown for 'CAT II', and fields for Length offset, Beam offset (with Port, Center, Starboard options), Heading offset (with 0°, 90°, 180°, 270° options), and Keel offset. The 'VESSEL NOTES' section includes a 'Notes' field.

VESSEL CHARACTERISTICS	
Name	My Vessel >
MMSI	236690000
IMO	-
Length	78.00 m
Beam	20.00 m
Draught	10.00 m
Reference point	- m
Manifold offset	- m

GPS ANTENNA OFFSETS	
● CAT II	
Length offset	50.00 m
Beam offset	Port Center Starboa... -1.00 m
Heading offset	0° 90° 180° 270° 0.00 °
Keel offset	10.00 m

VESSEL NOTES	
Notes	0 >

Figure 6.1: An example *Passage Plan* setup.

6.3 Notes

You may add notes to a vessel for current and future operations. If SafePilot Offshore is connected to a Port Server, these notes will be shared with other pilots connected to the same server. Select the *Notes* field to get to the list of notes, see fig. 6.3. In the list, click the first, empty row to create a new note. While editing you may tap the exclamation marks to mark this note as high priority. Notes can be sorted by priority or date by clicking the buttons at the top of the page. To delete a note, drag it to the left.

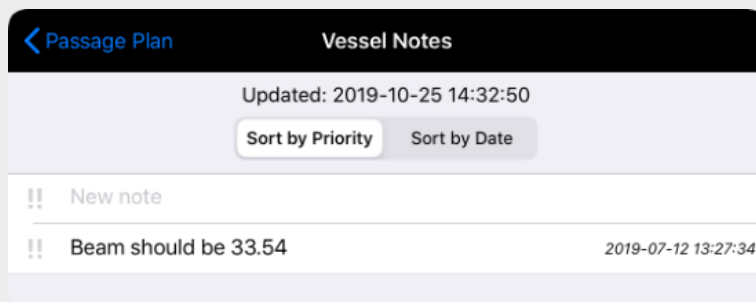


Figure 6.3: The vessel notes dialog with one note.

6.4 Route

You may select a route for the operation directly from the *Passage Plan*. See more about routes in section 8.1.1 on page 18 and in section 8.2 on page 20.

7 Vessel details

7.1 Own vessel

7.1.1 NAVIGATIONAL DATA

The basic navigational data for your vessel is always displayed in the *Top Panel* as described in section 4.1 on page 10. Further information may be displayed in other panels based on the active context.

Note 7.1-1

It is possible to adjust own vessel heading by tapping in the heading field within the *Top Panel*.

7.1.2 LIVE VESSEL PREDICTIONS

Advanced vessel movement predictions are always available for vessels with an installed SafePilotor SafeTugsystem onboard. This includes vessels connected to a Data Server. The prediction is a projection of the position and heading based on the current position, COG, SOG and ROT. It is activated by default but can be deactivated and modified in the *Motion* tab within the *Control Center*. The *Control Center* is explained in section 11 on page 27.

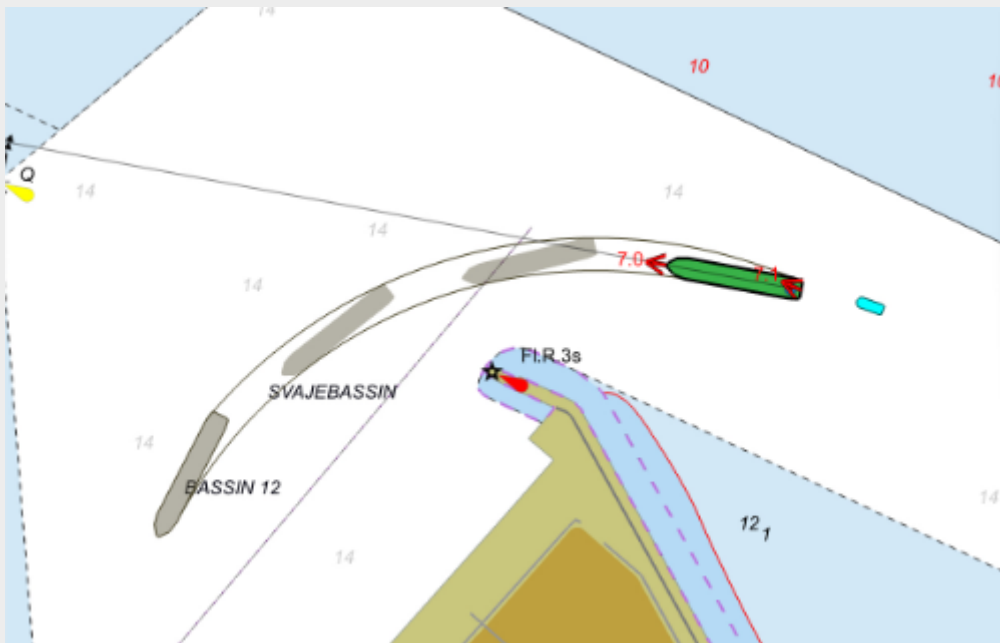


Figure 7.1: Tanker with prediction shapes.

7.1.3 CONNING POSITION

The conning position is used as origin for most position related calculations throughout SafePilot Off-shore. It is determined by the following prioritized rules:

1. If the reference position is set in the *Vessel Setup*, the conning position is on the center line with the given offset from the bow.
2. If a ship shape is drawn, the conning position is on the center line of the ship at the antenna's length offset from the bow.
3. Otherwise, the antenna location is used as the conning position.

The conning position used for all navigational and positioning calculations which include the following:

- BCR
- CPA
- Motion vectors
- SOG
- BCT
- EBL/VRM
- Passing waypoints
- TCPA
- COG
- Meeting points
- Ranges

7.1.4 ELECTRONIC BEARING LINE AND VARIABLE RANGE MARKER

An EBL/VRM can be added in three modes: *static*, *following* and *observing*. See section 8.1.3 on page 18 for details about the *static* mode.

The *following* mode will follow own vessel during navigation and will always point in the same direction no matter how the vessel moves. The EBL and VRM will appear by dragging from the center of own vessel in any direction. EBL/VRM can be edited by dragging in the junction or individually by dragging one of them.

You may observe a point on the chart by long pressing on any location. This will change the behavior of the EBL/VRM to display the information related to the point and your current location - during navigation.

For both *following* and *observing* mode you are able to change the origin of the EBL/VRM by dragging the marker above your own vessel. The following locations can be selected as origin: stern, conning, center, and bow.

Finally you may delete the EBL/VRM by tapping on the EBL/VRM lines.

7.1.5 VIRTUAL ANCHORS

You can use the *Drop Anchor* function to mark the location where an anchor was dropped. Long press on your vessel and select *Drop Anchor* to mark the location. You may drop an arbitrary number of anchors. Tapping on an anchor brings up information about distance, bearing and TTG for that particular anchor. Anchors are persisted between sessions. To remove an anchor long press on it and select *Delete Dropped Anchor*.

7.1.6 REAL TIME UNDER KEEL CLEARANCE

Normal under keel clearance (UKC) will calculate the UKC based on a fixed draught depth, the chart data and maybe some tide sensor data. But, it does not take into account the actual movements of the vessel.

This is what Realtime Under Keel Clearance (RUKC) does. It is defined as: *The smallest vertical distance between the vessel keel and known survey points.* This requires high precision movement data and are therefore only available for our top CAT devices.

Activation of RUKC

Install the depth files into SafePilot Offshore, see section 12.3.2 on page 31 and make sure to set all required vessel details:

- MMSI
- length
- beam
- length offset
- beam offset
- heading offsets
- keel offset

The RUKC will be shown in the vessel infobox.

7.2 Other vessels

7.2.1 AIS VESSELS

AIS targets are displayed with true shape when width, length and heading are available. If any of the data are missing, the AIS target will be displayed as a • symbol indicating the position or a triangle if the heading is available. If the heading is missing SafePilot Offshore assumes that HDG is the same as COG and the vessel shape will appear as a transparent ghost shape. If both HDG and COG are missing the transparent ghost shape of the vessel will have a HDG of zero degrees (pointing north) but is still drawn with actual size on the chart. Detailed AIS target information can be accessed by tapping on the vessel. The size of the infobox can be changed inside *Settings app*. In *Settings app* you can choose to show certain ship types with reduced detail to reduce clutter. These will be shown with a smaller symbol, no name and no motion vector.

7.2.2 STATIC VESSEL PREDICTIONS

The static vessel prediction is accessed by tapping on the clock in the lower right corner. This tool allow you to estimate where the vessel will be at a later point in time, according to the chosen value on the 'Length' slider. The prediction applies to all known vessels, which are predicted from the last known location, direction, and their current speed, for up to the next 60 minutes. You can change how this is shown on the screen by switching between the two modes. One mode moves the vessels and draws dashed lines from their original positions. The other mode keeps the vessels in their original positions and instead scales their motion vectors.

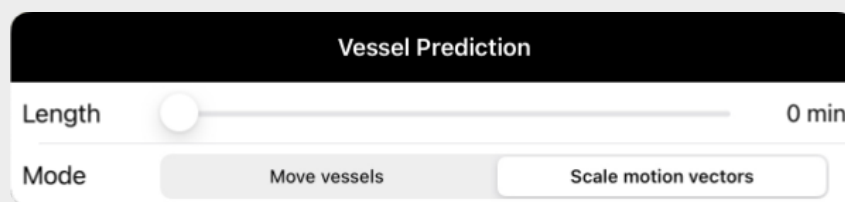


Figure 7.2: Static vessel prediction configuration dialog.

7.2.3 VIRTUAL BOARDING

You are able to virtually embark any vessel to pretend you are assisting it or to help a colleague observing the vessel. By long pressing on another vessel you may select *Embark*. All instruments and calculations will now act as if the other vessel were your own vessel and a blinking V will be shown in the upper left corner of the display. To return to your actual own vessel long press the vessel again and select *Disembark*.

8 Contexts

The *Contexts Panel* includes all the contexts in a *Context Wheel*. Each context will be explained in this chapter. Some of the contexts may include a *Tools Panel* as explained in section 4.3 on page 10.

8.1 The planning context



The planning context is used to plan and/or select a route to follow or to add special areas and annotations to the chart. All additions can only be edited while in this context to prevent unintended changes during operation. You have multiple tools available in the *Tools Panel* to help you create the chart elements which are described in this chapter.

8.1.1 THE ROUTE TOOL



The route tool is used to plan the route to follow. If a proper route already exists, tap on it to activate it. When it has been activated it will be used in the navigation context - see section 8.2 on page 20. Follow these steps to create a new route:

1. Make sure that no other routes are selected by tapping on an empty location in the chart.
2. Now long press on the chart to add your first waypoint.
3. To add another waypoint simply navigate to the new location and long press on it.

You should see a line connecting the two points. Continue until your route is complete. You can move a waypoint by dragging it and turns may also be adjusted by dragging the corresponding handle. Finally, long press on any waypoint to access advanced configurations for both the waypoint and the entire route. The configurations include:

- Max cross track distance.
- Speed limits.
- Wheel over points.
- Naming of waypoints and routes.
- Deletion of waypoints and routes.

8.1.2 THE FENDER LINE TOOL



This tool is used to add fender lines to the chart. These are used in the docking context to measure distances to the fender. Long press on the chart to add the start of the fender line and again to add the end. You may drag the points to move it, long press on a fender line to add a manifold position or long press on a fender point to edit details or delete it. See section 8.3 on page 20 for more details.

8.1.3 THE EBL/VRM TOOL



This tool is used to add an electronic bearing line and variable range marker. Long press on the chart to add the marker and drag the outline and the line to set the range and bearing. Long press again to edit details or to delete it.

8.1.4 THE ANNOTATION TOOL



This tool is used to annotate areas of interest by giving them a title, description and color. Annotations can be added as circles or polygons. On tool selection you will choose either the polygon option or the circle option. Long press on the chart to add an annotation and drag its components. Long press on the annotation to edit details or to delete it.

8.1.5 THE DISTANCE LINE TOOL



This tool is used to add distance measurements from your vessel to the line. Only the closest distance line to each side will be active during navigation and only when it is closer than 500 meters and you are moving towards it and is always shown when closer than 200 meters. Long press on the chart to add a new line and drag the points to move it. Long press again to edit details or to delete it.

Note 8.1-1

Distance lines will also be shown for closest vessels within 500 meters. They will get precedence if they come closer than the distance line. The only exception are vessels with reduced details which will be ignored.

8.1.6 THE TURNING BASIN TOOL



This tool is used to add a turning basing which is used in the turning basin context context (see section 8.4 on page 21). It will add distance measurements from the vessel to the center and perimeter of the turning basin. Long press on the chart to add a turning basing. Drag it to edit the size and long press it to edit details and to delete it.

8.1.7 THE PARALLEL INDEX TOOL



This tool is used to add Parallel Index lines on top of charts.

Long pressing on a location on the screen creates a starting point ("fix point") for the line, and long pressing on a different location afterwards creates a thick line between the starting point and the end point. By dragging the starting point you can move the Parallel Index line to a different location, and by dragging the end point you can change the direction of the line relative to the starting point. If you long press on an existing Parallel Index line you can add parallel index distance lines originating from the primary line. These lines can also be changed to "Safety Distance" lines by long pressing on the end point of the distance line and changing its type.

If you long press on the starting point of the Parallel Index line a popover will appear allowing for precise numerical entry, naming, and deletion.

Parallel Index lines can be viewed while in the navigation context by enabling them from the *Control Center* (see section 11 on page 27).

8.2 The navigation context



The navigation context is used during navigation along a route. A bottom bar will present the most crucial information for the route. This includes distance, bearing, ETA and XTD for both the next waypoint and the destination waypoint. See an example in fig. 8.1.

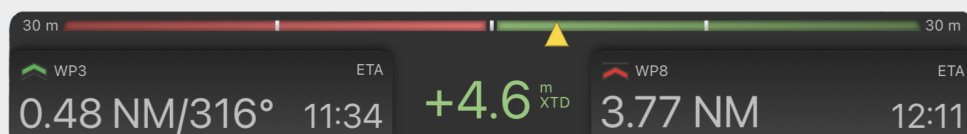





Figure 8.1: The bottom bar which appears in the navigation context.

Detailed ETA and TTG information can be inspected by tapping on either the next waypoint box or the destination waypoint box in the bar. By tapping on the next waypoint box you will see information related to this waypoint only. By tapping on the destination waypoint box you will see information related to the destination and all intermediate waypoints.

8.2.1 ROUTE SYMBOLS

A route consists of multiple waypoints where each waypoint can be shown as different symbols based on the type of waypoint and location relative to the vessel. The symbols are as following:

- Passed waypoint.
-  Next waypoint.
-  Upcoming waypoint located after next waypoint.
-  Destination waypoint.
- Waypoint after destination.

The default destination is the last waypoint along the route. To change the destination long press on the desired waypoint and select *Set as destination*. Here you can also set it as the next waypoint to skip another waypoint or set a target ETA. In this case, an infobox will display the recommended speed to reach the waypoint in time.

8.3 The docking context



The docking context shows the most relevant information while docking to a fender. Distances and speeds for bow and stern will be displayed in the *Tools Panel* as well as the angle from the vessel to the fender line. The chart will also show where the distances for bow and stern applies. If multiple fender lines exist the nearest will be selected. In some cases you may want to manually select another fender line. This is done by tapping on the desired fender line.

Note 8.3-2

The distances are calculated from the orthogonal angles from the fender line and the transverse speeds are relative to the center line of the vessel.

8.4 The turning basin context



The turning basin context has been optimized to show the most relevant information while turning in narrow areas. The *Tools Panel* displays transverse and longitudinal speeds together with the shortest distances forward and backward to the turning basin circle.

Note 8.4-3

All calculations are done from the center of the vessel - and not from the conning position as for other contexts. This is also indicated by the (center) notations on the SOG and COG instruments in the top bar.

8.5 The side by side context



In the side by side context you will see detailed information related to your vessel and another selected vessel. This includes:

- The distance between the vessels at bow and stern.
- The angle between the vessels.

Long press on another vessel to set it as side by side target. This will add distance lines and a relational heading to the right in the tool panel, as well as lines between your vessel and the side by side target vessel as seen in Figure fig. 8.2.

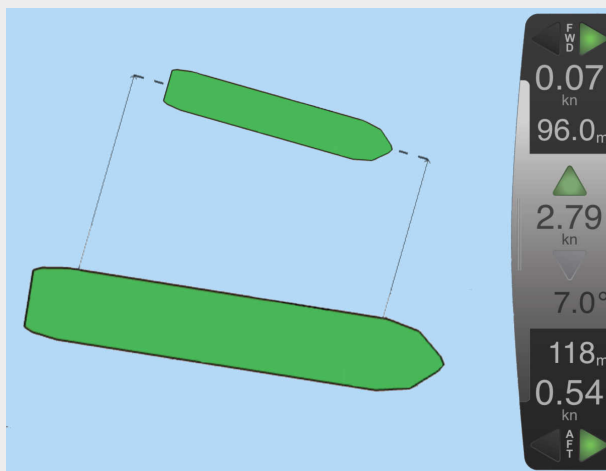


Figure 8.2: A Side by Side operation.

8.6 The tandem context



In the tandem context you will see detailed information relating to your own vessel and the other vessel. This includes:

- The minimum distance between the vessels.
- The angle between the vessels.
- Speed zones around the other vessel.
- Alarm zones around the other vessels.

The tandem target vessel is automatically chosen when data becomes available. The data includes alarm and speed zones and are typically broad casted through an UHF antenna on the tandem target vessel as seen in Figure fig. 8.3. A visual and audial alarm will show/sound if you either navigates too fast or enters danger areas specified by the tandem target vessel.

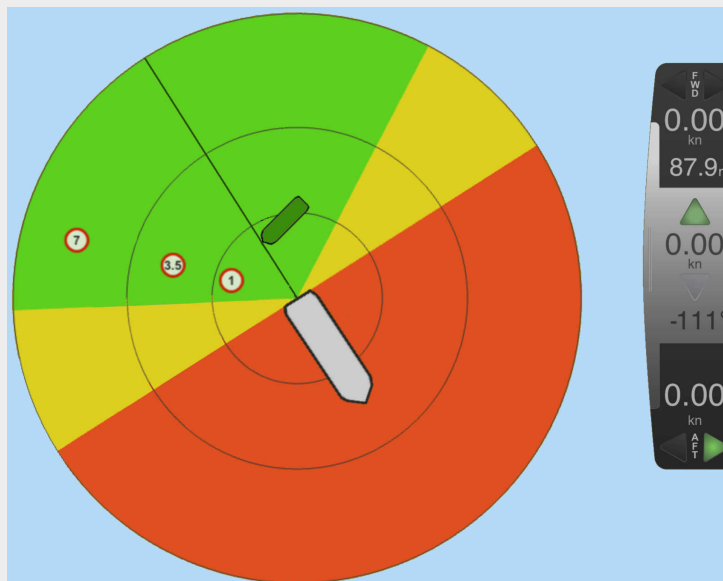


Figure 8.3: A Tandem operation.

8.7 The single point mooring context



The single point mooring context displays alarm and speed zones just as the tandem context along with the heading for the buoy. See the example in Figure fig. 8.4.

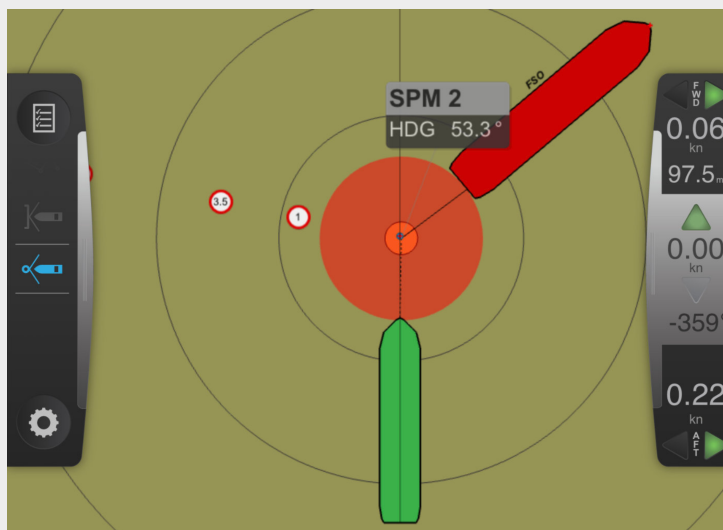


Figure 8.4: A Single Point Mooring operation.

9 Recording and Replaying

9.1 AIS recording

All vessel movements are recorded automatically for every operation and saved in separate files for later replay. You can access these recordings from the Replay Panel which is initially hidden at the bottom of the screen. You can make it appear/disappear by either tapping or dragging the visible flap.

To replay a recording of a previous operation, tap the Recording List icon on the panel's right side to see all available recordings and select the recordings you wish to see. A blinking replay symbol will be visible in the top left corner of the screen to indicate that a previous recording is being replayed. You can use the controls on the replay panel to slow down, speed up, or jump in time in the recording.

WARNING 9.1-1

If you start a replay in the middle of an active operation the recording of vessel movements will stop and no data will be saved while replaying. Also, when resuming the active operation again, a new recording will be created, and the operation will then consist of two recordings.



Figure 9.1: A recording being replayed, indicated by the blinking replay symbol in the top left corner.

9.2 Voice recordings

With Feature Pack 22, voice recording is also available, but is disabled by default. To enable voice recordings, go to the app settings (*Home screen* → *Settings* → *SafePilot Offshore*) and scroll to the "Audio" section. From here you can enable or disable voice recordings.

With voice recording enabled, SafePilot Offshore will automatically record audio in the iPad's vicinity

or through a connected microphone together with the vessel movements. These voice recordings are also stored in separate files with the ".aac" extension, but matches the name of the vessel movements recording. If a voice recording exists for a stored recording, it will automatically be replayed together with the vessel movements when selecting the recording from the Recording List. If you do not wish to listen to the voice recording when replaying, you can tap the mute button on the replay panel to toggle the audio playback.

Note 9.2-2

When a recording has been started the iPad will continue to record audio even if another app is opened instead of SafePilot Offshore or the iPad's screen is turned off (locking the iPad). The recording will continue for 15 mins after data has stopped being received (after disconnecting from the CAT device). You can stop recording audio manually by either disabling voice recording from the settings, or by closing SafePilot Offshore entirely (this also stops recording of vessel movements).

10 Fullscreen displays

Fullscreen displays are available for some contexts like navigation, docking and lock. Tap on the side panel on the right-hand side to bring up the fullscreen displays related to the current context. If the context contains multiple fullscreens you will be able to swipe to the side to access them within any fullscreen view.



Figure 10.1: Some fullscreens: top left: docking, top right: in a lock, bottom left: simple navigation and bottom right: detailed navigation.

10.1 Side by Side Fullscreen

The side by side context includes a full screen display, which shows the current movements of own vessel as well as the relative bearing and distances to the target side by side vessel at bow and stern as seen in Figure fig. 10.2 on the following page.

10.2 Generic Fullscreen

The generic full screen mode receives mixed data from the target vessel and presents these in groups in a full screen display as shown in Figure fig. 10.3 on the next page.



Figure 10.2: The Side by Side fullscreen.

CURRENT				HAWSER		MRU		
Current Direction	Current Speed	Depth	Sea Temp.	Hawser		Altitude	Pitch	Roll
265.0	1.0	15.0	2.5	1.0		0.2	70.7	-2.9
°	m/s	m	°C	t		m	°	°

PTU			THRUSTER			VISIBILITY		
Air Temp.	Humidity	Pressure	Thruster 1	Thruster 2	Thruster 3	Visibility		
6.1	17.0	261.0	100.0	-86.3	91.1	1.0		
°C	%	hPa	%	%	%	m		

WAVES					WIND		
Wave Height	Peak Period	Peak Length	Peak Direction	Max Height	Gust	Wind Direction	Wind Speed
10.0	3.1	5.0	230.0	5.0	6.0	265.0	4.9
m	s	m	°	m	m/s	°	m/s

Weather

Exit fullscreen

Figure 10.3: The generic fullscreen.

11 Control center

The *Control Center* is located last in the *Contexts Panel* as a *Gear* icon. It controls the most used options and displays among other things server connection statuses and license information.

11.1 Display settings

In this dialog you may alter the visual aspects of SafePilot Offshore and the content of the charts. Figure 11.1 shows a sample of this dialog.

11.1.1 DISPLAY

Here you may change from day, to dusk, to night mode as well as adjusting the overall brightness.

11.1.2 CHART FEATURES

Feature layers

Choose between: Basic, Standard and Full to show more or less details in the chart. Appendix A on page 33 tells exactly what is included in the three feature options.

Zones of confidence

Enable zones of confidence to get an understanding of the quality of surveyed data in the charts. A legend in the lower left corner will map each color to a quality level. Details about the quality levels are available in appendix C on page 37.

Correct soundings

This will correct soundings based on actual tide level.

ENC soundings

Displays soundings from ENC charts if available.

Gridded soundings

Displays soundings from S-102 charts and XYZ charts if available.

Gridded bathymetry

Toggle between traditional isoband representation and heatmap representation for S-102 charts.

11.1.3 SAFETY CONTOURS

Safety contours are a way of indicating where it is safe to navigate and where it's too shallow. It works by highlighting soundings and depth contours that are separated by certain thresholds.

Deep soundings are shown as faded gray, safe soundings as black and shallow soundings as red. Depth contours between deep and safe areas are colored black and depth contours between safe and shallow areas are colored red.

The safety contours thresholds can be configured either as fixed depths, or calculated based on your under keel clearance or a percentage of your draught.

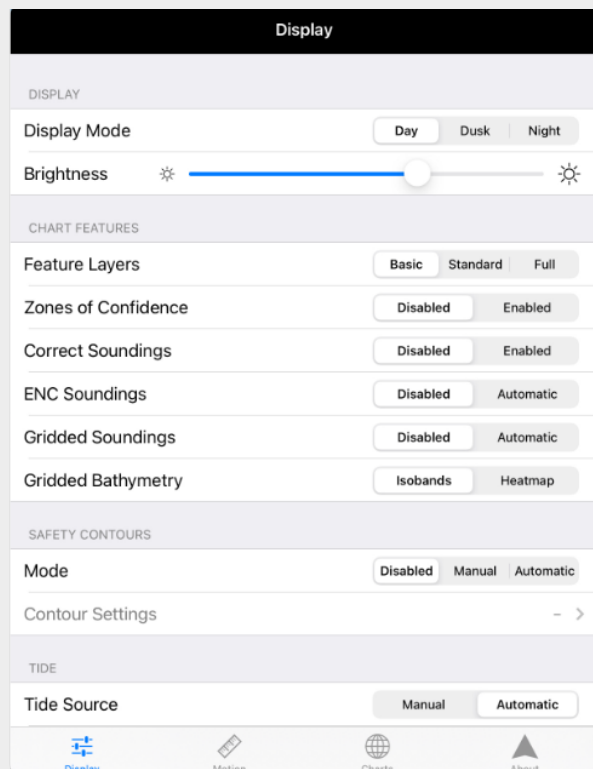


Figure 11.1: A sample of the display settings dialog in SafePilot Offshore.

11.1.4 TIDE

Use tide levels from the Data Server or a tide table or set the current tide level manually.

11.1.5 PARALLEL INDEX

Display Parallel Index lines while in the navigation context.

11.1.6 SHAPE FILE COUNTOUR

Highlight the Shape File Countour depth line in the chart from shape files if available.

11.2 Motion

This tab includes settings for vessel movements and predictions. Figure 11.2 shows a sample of this dialog.

11.2.1 MOTION VECTORS

A motion vector can be added to your vessel alone or all vessels. It will add one motion vector from your conning position based on SOG and COG. If your own vessel is moving slower than 5 knots or is turning more than 10 °/min, two motion vectors will be shown, one from the bow and one from the stern. All other vessels will only show one motion vector which will originate from their conning position if the required information are available and otherwise from their antenna position.

11.2.2 PREDICTION

This will predict the location of your own vessel as well as other SafePilot vessels received through the Data Server. It is shown as a shadow next to the current vessel location. You can change the interval between the shapes and the number of shapes.

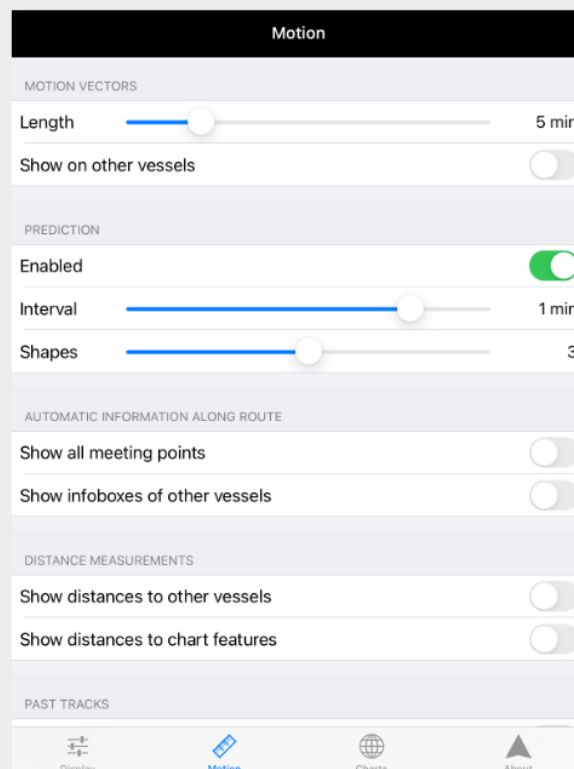


Figure 11.2: The motion settings dialog in SafePilot Offshore.

11.2.3 AUTOMATIC INFORMATION ALONG ROUTE

Show all meeting points

This will show meeting points for all other ships around your current route. The only exception is ships with a SOG below 1 knot.

Show infoboxes of other vessels

This will automatically display the infobox for other vessels as long as the following criteria are fulfilled:

1. The other vessel has to be moving.
2. The other vessel has to be closer than ≈ 1800 meters front or behind and closer than ≈ 350 meters to the sides.

11.2.4 DISTANCE MEASUREMENTS

Show distances to other vessels

This will toggle distance to other vessels.

Show distances to chart features

When enabled, shows the shortest measurement against a range of chart features. The chart features includes dredged areas, land areas, wrecks, obstructions, mooring/warping facilities, and more. The shortest distance from both the port and starboard side of the vessel to the feature is measured and displayed in the chart.

11.2.5 PAST TRACK

You can show past tracks of your own vessel as well as other vessels. The track can be displayed as either a line or a series of ship shapes and it automatically disappears after a chosen interval.

11.2.6 ALERTS

Speed alerts

You may enable an audible and visible warning on transverse docking speeds. If either bow or stern speed exceeds the set limit, the relevant number will be colored amber, and an audio alert will sound.

Distance alert

A distance warning can be enabled to trigger if the docking or lock distance is less than the chosen value.

11.3 Server

This tab shows if you are connected to a Data Server and/or Port Server. You can see the server addresses and enable or disable the internet AIS stream to receive AIS vessels from the Data Server.

11.4 Charts

This tab informs about installed charts. Tap on a chart for detailed information like title, edition and expiry date. See more details about installing charts in section 12 on the following page.

11.5 About

The tab shows detailed license information like what is included and the ENC user permit used to purchase charts. It also links to our customer support and this manual.

12 Charts

SafePilot Offshore supports charts from different vendors. PRIMAR and NOAA charts can be installed automatically or manually based on your preferences. But, charts from other vendors has to be installed manually. All charts can be used alone or in combination as your prefer.

12.1 PRIMAR charts

SafePilot Offshore supports ENC charts from PRIMAR. If your user permit is added to your chart order, the charts will automatically be downloaded and installed into SafePilot Offshore. The user permit is displayed in the *About* tab in the *Control Center* in section 11.5 on the previous page. SafePilot Offshore will automatically check for chart updates and notify you, when new charts are ready to be installed.

12.2 NOAA charts

SafePilot Offshore also supports ENC charts from NOAA. You have three options to install NOAA charts:

1. Using SafePilot Shore Viewer together with a Port Server to select and distribute charts to all pilots.
2. Manually install charts or chart IDs onto the Port Server.
3. Manually install charts or chart IDs into SafePilot Offshore.

12.2.1 DEFINE NOAA CHART IDS FOR MANUAL INSTALLATION

Please contact our support team by email If you want to manually create a file with NOAA chart IDs. It is a simple process but hard to describe so they will be happy to assist you.

12.3 Distribute charts to all users

You may choose to use SafePilot Cloud to distribute your own charts to all users of your organization. Upload the file to SafePilot Cloud to distribute these files. These charts may also be installed manually on each iPad, see section 12.4.

12.3.1 BATHYMETRIC INLAND ELECTRONIC NAVIGATIONAL CHARTS

SafePilot Offshore supports bIENC. These charts are typically created from frequently updated, high resolution survey data and represents only the seabed. They are more detailed and accurate than ENC charts. As bIENCs are designed to complement traditional ENCs and inland ENCs, they are only visible where they overlap such charts. Furthermore, they must have the underlying ENCs'/IENCs' intended usage level set in their range of supported usage levels. More information is available in the bIENC product specification at <http://ienc.openecdis.org/content/bathymetric-inland-enc-product-specification>.

12.3.2 RUKC CHARTS

RUKC uses chart files of the type sasc. It is a standard asc file with a custom SafePilot Offshore header in the top. See more about the format in appendix B on page 36.

12.4 Manual installation of charts

Downloaded charts can be installed into SafePilot Offshore. All charts should be installed directly into *SafePilot Offshore Documents* directory. See section 13 on the following page for details about the installation and extraction process of files.

13 File handling

You may extract or install charts and configuration files manually into SafePilot Offshore. This includes the following:

- Annotations (.san)
- Charts (.000, .gml, .prm, .s63, .xyz and .zip)
- Display scheme overwrites (.json)
- Distance lines (.sdl)
- Fender lines (.sfl)
- Locks (.slo)
- Recordings (.log and .ukc)
- Routes (.spx)
- Shapes (.dbf, .prj, .shp and .shx)
- Soundings (.sasc)

All files should be installed in either the root of the document folder or in a subdirectory if it exists.

13.1 Access the SafePilot Offshore documents folder of the iPad

The steps varies a bit depending on which operative system you are running on your pc.

13.1.1 MACOS UNTIL VERSION 10.14 (MOJAVE) OR WINDOWS

You can connect a computer to the iPad via iTunes which you can download free from Apples website at: <https://www.apple.com/itunes/>.

Follow these steps to enter the document folder on the iPad on MacOS versions:

1. Connect the iPad to the computer with a cable.
2. Open iTunes on the computer.
3. Select the *iPad*.
4. Click on *File sharing*.
5. Select SafePilot Offshore in the list.

You may now extract or install files directly into SafePilot Offshore by dragging items or using the *Add...* button.

13.1.2 MACOS FROM VERSION 10.15 (CATALINA)

You are able to access the files on the iPad directly through finder like this:

1. Connect the iPad to the computer with a cable.
2. Open finder on the computer.
3. Select the *iPad*.
4. Click on *Files*.
5. Select SafePilot Offshore in the list.

You may now extract or install files directly into SafePilot Offshore by dragging items.

Appendices

A Feature layer sets

As described in section 11.1.2 on page 27 you can choose between displaying only the basic chart features, the standard features or all features. What exactly is included in the different sets are explained in the following sections.

A.1 The basic feature set

This set includes a minimal set of chart features which are:

- Bridge (*BRIDGE*)
- Built-up area (*BUAARE*)
- Canal (*CANALS*)
- Causeway (*CAUSWY*)
- Coastline (*COALNE*)
- Depth area (*DEPARE*)
- Depth contour (*DEPCNT*)
- Dredged area (*DRGARE*)
- Floating dock (*FLODOC*)
- Gate (*GATCON*)
- Hulk (*HULKES*)
- Lake (*LAKARE*)
- Land area (*LNDARE*)
- Pontoon (*PONTON*)
- River (*RIVERS*)
- Shoreline construction (*SLCONS*)
- Unsurveyed area (*UNSARE*)

A.2 The standard feature set

This set includes the most used chart features. It consists of all features from the basic feature set and the following:

- Anchor berth (*ACHBRT*)
- Anchorage area (*ACHARE*)
- Beacon, cardinal (*BCNCAR*)
- Beacon, isolated danger (*BCNISD*)
- Beacon, lateral (*BCNLAT*)
- Beacon, safe water (*BCNSAW*)
- Beacon, special purpose/general (*BCNSPP*)
- Berth (*BERTHS*)
- Building, single (*BUISGL*)
- Buoy, cardinal (*BOYCAR*)
- Buoy, installation (*BOYINB*)
- Buoy, isolated danger (*BOYISD*)
- Buoy, lateral (*BOYLAT*)
- Buoy, safe water (*BOYSAW*)
- Buoy, special purpose/general (*BOYSPP*)
- Cable area (*CBLARE*)
- Cable, overhead (*CBLOHD*)
- Cable, submarine (*CBLSUB*)
- Cargo transshipment area (*CTSARE*)
- Caution area (*CTNARE*)
- Conveyor (*CONVYR*)
- Dam (*DAMCON*)
- Daymark (*DAYMAR*)
- Deep water route centerline (*DWRTCL*)
- Deep water route part (*DWRTPT*)
- Distance mark (*DISMAR*)
- Dock area (*DOCARE*)

- Dry dock (*DRYDOC*)
- Dumping ground (*DMPGRD*)
- Fairway (*FAIRWY*)
- Fence/wall (*FNCLNE*)
- Fishing facility (*FSHFAC*)
- Fog signal (*FOGSIG*)
- Harbour facility (*HRBFAC*)
- Ice area (*ICEARE*)
- Land region (*LNDRGN*)
- Landmark (*LNDMRK*)
- Light (*LIGHTS*)
- Light float (*LITFLT*)
- Light vessel (*LITVES*)
- Lock basin (*LOKBSN*)
- Log pond (*LOGPON*)
- Marine farm/culture (*MARCUL*)
- Military practice area (*MIPARE*)
- Mooring/Warping facility (*MORFAC*)
- Navigation line (*NAVLNE*)
- Obstruction (*OBSTRN*)
- Offshore platform (*OFSPLF*)
- Pile (*PILPNT*)
- Pilot boarding place (*PILBOP*)
- Pipeline area (*PIPARE*)
- Pipeline, overhead (*PIPOHD*)
- Pipeline, submarine/on land (*PIPSOL*)
- Precautionary area (*PRCARE*)
- Pylon/bridge support (*PYLONS*)
- Radar transponder beacon (*RTPBCN*)
- Radio calling-in point (*RDOCAL*)
- Railway (*RAILWY*)
- Recommended route centerline (*RCRTCL*)
- Recommended track (*RECTRC*)
- Recommended traffic lane part (*RCTLPT*)
- Restricted area (*RESARE*)
- Road (*ROADWY*)
- Sea area/named water area (*SEAARE*)
- Seabed area (*SBDARE*)
- Sounding (*SOUNDG*)
- Submarine transit lane (*SUBTLN*)
- Topmark (*TOPMAR*)
- Traffic separation line (*TSELNE*)
- Traffic separation scheme boundary (*TSS-BND*)
- Traffic separation scheme crossing (*TSS-CRS*)
- Traffic separation scheme lane part (*TSSLPT*)
- Traffic separation scheme roundabout (*TSS-RON*)
- Traffic separation zone (*TSEZNE*)
- Two-way route part (*TWRTPT*)
- Underwater/awash rock (*UWTROC*)
- Water turbulence (*WATTUR*)
- Wreck (*WRECKS*)

A.3 The full feature set

This set includes all chart features. It consists of all features from the basic and standard feature sets and the following:

- Accuracy of data (*M_ACCY*)
- Administration Area (Named) (*ADMARE*)
- Airport/airfield (*AIRARE*)
- Archipelagic Sea Lane (*ARCSLN*)
- Archipelagic Sea Lane axis (*ASLXIS*)
- Checkpoint (*CHKPNT*)
- Coastguard station (*CGUSTA*)
- Compilation scale of data (*M_CSCL*)

- Contiguous zone (*CONZNE*)
- Continental shelf area (*COSARE*)
- Control point (*CTRPNT*)
- Coverage (*M.COVR*)
- Crane (*CRANES*)
- Current - non-gravitational (*CURRENT*)
- Custom zone (*CUSZNE*)
- Dyke (*DYKCON*)
- Exclusive economic zone (*EXEZNE*)
- Ferry route (*FERYRT*)
- Fishery zone (*FSHZNE*)
- Fishing ground (*FSHGRD*)
- Fortified structure (*FORSTC*)
- Free port area (*FRPARE*)
- Gridiron (*GRIDRN*)
- Harbour area (administrative) (*HRBARE*)
- Horizontal datum shift parameters (*M.HOPA*)
- Incineration area (*ICNARE*)
- Inshore traffic zone (*ISTZNE*)
- Land elevation (*LNDELV*)
- Local magnetic anomaly (*LOCMAG*)
- Magnetic variation (*MAGVAR*)
- Nautical publication information (*M.NPUB*)
- Navigational system of marks (*M.NSYS*)
- Offshore production area (*OSPARE*)
- Oil barrier (*OILBAR*)
- Production/storage area (*PRDARE*)
- Radar line (*RADLNE*)
- Radar range (*RADRNG*)
- Radar reflector (*RADRFL*)
- Radar station (*RADSTA*)
- Radio station (*RDOSTA*)
- Rapids (*RAPIDS*)
- Rescue station (*RSCSTA*)
- Runway (*RUNWAY*)
- Sand waves (*SNDWAV*)
- Sea-plane landing area (*SPLARE*)
- Signal station, traffic (*SISTAT*)
- Signal station, warning (*SISTAW*)
- Silo/tank (*SILTNK*)
- Slope topline (*SLOTOP*)
- Sloping ground (*SLOGRD*)
- Small craft facility (*SMCFAC*)
- Sounding datum (*M.SDAT*)
- Spring (*SPRING*)
- Straight territorial sea baseline (*STSLNE*)
- Survey reliability (*M.SREL*)
- Swept Area (*SWPARE*)
- Territorial sea area (*TESARE*)
- Tidal stream - flood/ebb (*TS.FEB*)
- Tidal stream - harmonic prediction (*TS.PRH*)
- Tidal stream - non-harmonic prediction (*TS.PNH*)
- Tidal stream - time series (*TS.TIS*)
- Tidal stream panel data (*TS.PAD*)
- Tide - harmonic prediction (*T.HMON*)
- Tide - non-harmonic prediction (*T.NHMN*)
- Tide - time series (*T.TIMS*)
- Tideway (*TIDEWY*)
- Tunnel (*TUNNEL*)
- Unsurveyed area (*UNSARE*)
- Vegetation (*VEGATN*)
- Vertical datum of data (*M.VDAT*)
- Waterfall (*WATFAL*)
- Weed/Kelp (*WEDKLP*)

B The sasc file format

The sasc file is a deviation of the asc file. The asc file contains UTM coordinates and survey depths in the format:

<EASTING>, <NORTHING>, <DEPTH>

The *<DEPTH>* is the height in meters, so for depths the value will be negative.

The header is:

UTMZone *<UTMZONE NUMBER> <UTMZONE HEMISPHERE>*

DataBegin

Where **<UTMZONE NUMBER>** is the UTM zone number (1-60) and **<UTMZONE HEMISPHERE>** is either **N** for northern hemisphere or **S** for southern hemisphere.

Here follows an example of the start of a sasc file:

UTMZone 32 N

DataBegin

630992.13,6170992.13,-16.54

630992.38,6170992.13,-16.56

630992.63,6170992.13,-16.54

630992.88,6170992.13,-16.54

C Categories of zones of confidence

SafePilot Offshore implements the same categorization standard as defined by S-57. The different areas are displayed as semi-transparent colored areas matching the standard of S-57. Table C.1 summarizes the area definitions.

ZOC	Position accuracy	Depth accuracy	Seafloor coverage	Typical survey characteristics
A1	±5m +5% depth	±0.5m +1% depth	Full area search undertaken. Significant seafloor features detected and depths measured.	Controlled, systematic survey high position and depth accuracy achieved using DGPS or a minimum three high quality lines of position (LOP) and a multibeam, channel or mechanical sweep system.
A2	±20m	±1.0m +2% depth	Full area search undertaken. Significant seafloor features detected and depths measured.	Controlled, systematic survey achieving position and depth accuracy less than ZOC A1 and using a modern survey echosounder and a sonar or mechanical sweep system.
B	±50m	±1.0m +2% depth	Full seafloor coverage not achieved; uncharted features, hazardous to surface navigation are not expected but may exist.	Controlled, systematic survey achieving similar depth but lesser position accuracies than ZOCA2, using a modern survey echosounder, but no sonar or mechanical sweep system.
C	±500m	±2.0m +5% depth	Full area search not achieved, depth anomalies may be expected.	Low accuracy survey or data collected on an opportunity basis such as soundings on passage.
D	Worse than ZOC C	Worse than ZOC C	Full area search not achieved, large depth anomalies may be expected.	Poor quality data or data that cannot be quality assessed due to lack of information.
U	Unassessed - The quality of the bathymetric data has yet to be assessed.			

Table C.1: A summary of the area definitions for the zones of confidence definition by S-57.



Trelleborg is a world leader in engineered polymer solutions that seal, damp and protect critical applications in demanding environments. Its innovative solutions accelerate performance for customers in a sustainable way.

WWW.TRELLEBORG.COM/MARINEANDINFRASTRUCTURE



facebook: [TrelleborgMarineandInfrastructure](https://www.facebook.com/TrelleborgMarineandInfrastructure)
twitter: [@TrelleborgMI](https://twitter.com/TrelleborgMI)
youtube.com/c/TrelleborgMarineInfrastructure
flickr.com/photos/marineandinfrastructure
linkedin.com/company/trelleborg-marine-and-infrastructure
Thesmarterapproachblog.trelleborg.com